



8:53 * 9:10	Odakyu Line, Shinjuku Station	Limited Express Romancecar Approx. 65 min.
10:02 * 10:12	Odakyu Line, Katase - Enoshima Station	Walk Approx. 3 min.
10:30	Enoshima Aquarium	Walk Approx. 5 min.
12:00	Fujisawa City Tourist Center	Walk Approx. 15 min.
12:30	Enoshima Island Spa	Walk Approx. 10 min.
13:20	Enoshima Shrine	Walk Approx. 10 min.
13:30	Enoshima Samuel Cocking Garden	Walk Short time
13:50	Enoshima Sea Candle	Walk Approx. 10 min.
15:15	Benzaiten Nakamise Street	Walk Approx. 20 min.
17:26 * 18:00	Odakyu Line, Katase - Enoshima Station	Limited Express Romancecar Approx. 65 min.
18:35 * 19:13	Odakyu Line, Shinjuku Station	

* The schedule changes on Saturdays and holidays.

● Spots for overnight stay

- Iwamoto Honkan**
http://www.iwamoto.co.jp/
Iwamoto features traditional Japanese-style guest rooms that command a view of the ocean and Mt.Fuji. It was originally a temple where guests stayed overnight, but was transformed into an inn in 1874.
- Ebisuya**
http://www.ebisuyaryokan.jp/
A traditional Japanese-style inn that has 350-years history. It has features such as a mini museum that stores traditional Japanese crafts and works of art.

Enoshima 1-Day Passport (eno-pass)



Odakyu line discount ticket allows you to enjoy unlimited stopovers on the Odakyu Line between Fujisawa and Katase-Enoshima, as well as a round trip discount ticket for trips between the station you are departing from and Fujisawa. It gives you free admission to the Enoshima Escar, Enoshima Samuel Cocking Garden, Enoshima Sea Candle (lighthouse observation tower), and Enoshima Iwaya Cave as well as discounts at Enoshima Aquarium, Enoshima Island Spa, and Hoanden (Octagonal Hall of Statues) at Enoshima Shrine. Furthermore, it gives you a 5% discount on all purchases of 1,000 yen or more at about sixty restaurants and gift shops on the island of Enoshima. See here for details. <http://www.odakyu.jp/english/deels/>

● Entry-free facilities

- Enoshima Escar
- Enoshima Samuel Cocking Garden
- Enoshima Sea Candle (lighthouse observation tower)
- Enoshima Iwaya Cave

● Facilities eligible for discounts

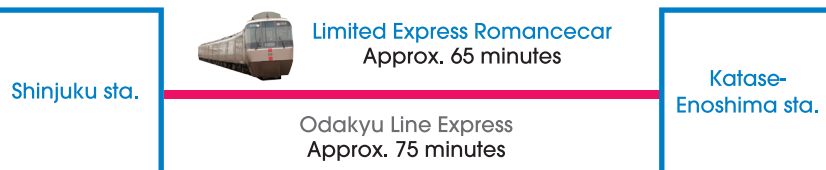
- Enoshima Aquarium
- Enoshima Island Spa
- Hoanden (Octagonal Hall of Statues) at Enoshima Shrine
- Restaurants and gift shops on the island of Enoshima.

Enoshima 1-Day Passport Ticket Fares (Unit: yen)

Departure station	Adults	Children (6 to 11 years old)
From Shinjuku	1,970	990

*An additional limited express ticket is required for rides on the Romancecar.

Access to KATASE ENOSHIMA



*Duration of the journey depends on your departure station.

Just a short hop to Kamakura

You will ride the popular "Enoden" (Enoshima Electric Train) from Enoshima Station, which is a 10-minute walk from Katase-Enoshima Station. If you are going to the old capital of Kamakura, please do take a ride on it. For tourism of Enoshima and Kamakura, the Enoshima-Kamakura Freepass is handy; it is an all-you-can-ride package for the Odakyu Line and Enoden!
URL: <http://www.odakyu.jp/english/deels/>



- 1 Kamakurakokomae**
An Enoden railroad crossing that is famous among anime fans because it appears in the opening of a popular Japanese basketball anime.
- 2 Hase-dera Temple**
Hase-dera Temple, located right by the seashore, overlooks the Shonan waters as it is high up on a hill. It is known as a temple that is rich in plant life and is famous for its beautiful hydrangeas during the rainy season (late May to late June) and bright red leaves in autumn (late November to early December).
- 3 Kotoku-in Temple**
Kotoku-in Temple is famous for its Great Buddha statue. This huge statue which sits 13.35 meters-tall including its pedestal is one of the three great Buddha statues of Japan.
- 4 Tsurugaoka Hachimangu Shrine**
Tsurugaoka Hachimangu, a shrine built in the year 1063 is the symbol of Kamakura. Inside the grounds you can see attractions such as the Museum of Shrine Treasures and Peony Garden. (Only available during the season)

Enoshima / Kamakura Freepass Fares (Unit: yen)

Departure station	Adults	Children (6 to 11 years old)
From Shinjuku	1,470	740

*An additional limited express ticket is required for rides on the Romancecar.

Odakyu Sightseeing Service Center, Shinjuku

Created just for foreign tourists, the Center is staffed with English, Chinese and Korean speakers, and in addition to transportation information, sells Limited Express Romancecar tickets, Freepasses (Discount Excursion Ticket) and more.
Business hours: 8:00 a.m. to 6:00 p.m.
TEL 03-5321-7887 / FAX 03-5321-7886
E-mail: welcom@odakyu-dentetsu.co.jp



Odakyu Global site

You can check all kinds of tourist information on the Odakyu website!
<http://www.odakyu.jp/english/>



Odakyu official facebook

You can check latest information of Odakyu
<https://www.facebook.com/odakyu.en>



Fujisawa Tourist Center

<http://www.fta-shonan.jp/>
<http://www.discover-fujisawa.jp/>



"Muslim Friendly Restaurant Guidebook Kanagawa" (English) by Prof. OKUDA's Lab.

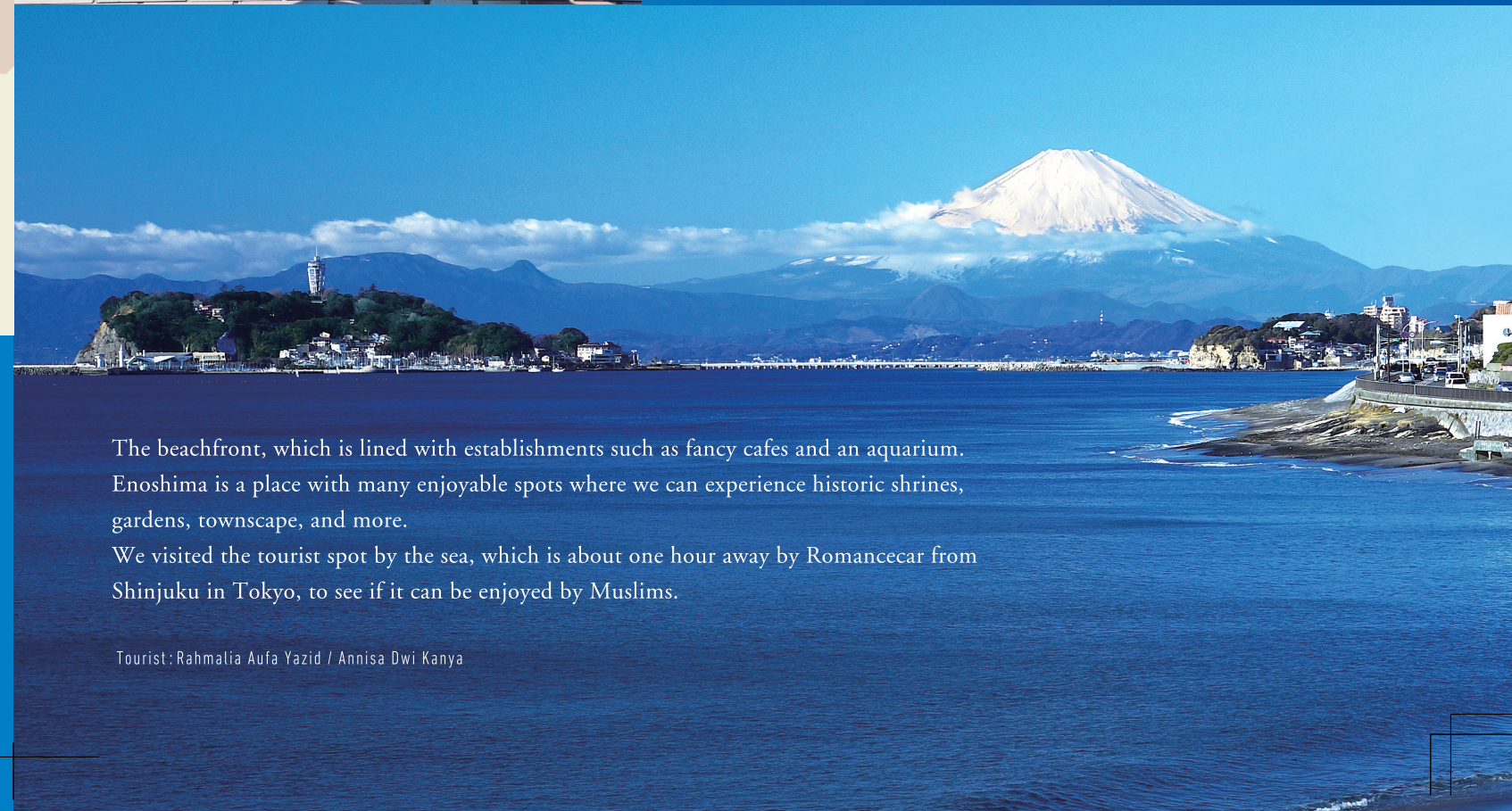
<http://nafidha.sfc.keio.ac.jp/>

Information in this pamphlet is as of January, 2017.



Muslim Tourism in Enoshima

Let's go to a long-desired trip to Enoshima island!



The beachfront, which is lined with establishments such as fancy cafes and an aquarium. Enoshima is a place with many enjoyable spots where we can experience historic shrines, gardens, townscape, and more.

We visited the tourist spot by the sea, which is about one hour away by Romancecar from Shinjuku in Tokyo, to see if it can be enjoyed by Muslims.

Tourist: Rahmalia Aufa Yazid / Annisa Dwi Kanya

Enoshima Guide Spot.1 Shinjuku Sta.

The trip to a popular tourist spot Enoshima in Japan, the place we have longed for is finally about to start. Katase-Enoshima Station, which is the gateway to Enoshima, can be reached in about 65 minutes from Shinjuku by the Limited Express Romancecar.



After gathering information at the Odakyu Sightseeing Service Center, we got Enoshima 1-Day Passport discount sightseeing ticket and Limited Express Romancecar ticket! There is free WiFi in the Romancecar (ID: Odakyu_Free_Wi-Fi).

* This does not correspond to some Romancecars.



AM8:53
Let's go to Enoshima from Shinjuku
by Romancecar

Enoshima Guide Spot.2 Enoshima Aquarium



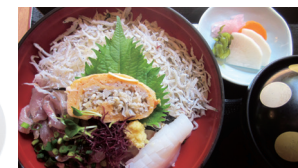
AM10:30
Enoshima Aquarium boasts some of
the great exhibitions in Japan

Arrived at Katase-Enoshima Station! Once you step out of the station, you can hear the waves sounds and smell of the sea breeze. After you cross the route134, the ocean and Enoshima are right in front of you! We were able to see Mount Fuji, the best mountain in Japan.



(LEFT) We saw a dolphin show for the first time. It's very exciting to see such high jumps and synchronized performances. (RIGHT) The fourteen types of jellyfish are always displayed in the hall that is modeled after the inside of a jellyfish. The beautiful lighting creates a surreal atmosphere.

Recommended to those who want to take a challenge at Japanese cuisine!



Across from Enoshima Island Spa, there is Marudai Sensui, a restaurant that serves Japanese food made with local ingredients. Their dishes made with freshly-caught seafood are especially popular.

We offered a prayer at a space in Fujisawa Tourist Center kindly provided for us.

We got maps and brochure at the tourist center on the way to Enoshima from Enoshima Aquarium. We asked for a space for prayer at the reception counter.

* Not available at all times. There may be cases where you can not use the space for your prayer when it's been used for meetings.
* Only provided space.
* No mats service.
* Wudu can be performed.



PM13:20
The essence of Enoshima
is on the top of the island

Enoshima Guide Spot.4 Enoshima

On the top of Enoshima, there is a tower shaped like a candle. Two of us headed up to the top, hoping to get a beautiful view. You can reach the top of the hill right away by taking the Enoshima Escar, for which you can get a discount by showing Enoshima 1-Day Passport. In addition to the tower, there is also a botanical garden that was made by Mr. Samuel Cocking, a British trading merchant, handed over to the present time from 1880's.



Enoshima Shrine where Japanese people feel its mystical energy. Enjoying looking at famous winter tulips. On sunny days you can see Mount Fuji!

Enoshima Guide Spot.5 Benzaiten Nakamise st.



We have ice cream called "Hamabeno ice", which had been recommended by a friend. We have discovered a Hello Kitty specialty shop, irresistible to fans!

COMMENT

I enjoyed the scenery from Enoshima Aquarium at nightfall the most. There were many things to take pictures, such as adorable fishes in their tanks as well as the facility itself. Enoshima is a small island that can be reached on foot with many attractions.

I recommend Benzaiten Nakamise street. I wish I could eat more dishes arranged with the famous "shirasu" fish. It was nice to be able to see both the ocean and Mount Fuji. I also want to recommend it to my family. I found Enoshima is a relaxing and enjoyable place for Muslims.



Enoshima Guide Spot.3 Enoshima Island Spa



The recommended dishes are the Cicinielli pizza topped with Shirasu and aragula, and the Frutti di mare pasta dish that contains plenty of seafoods. We had been looking forward to trying out the "shirasu" (baby fish of sardines), which is a local specialty of Enoshima.

*4th floor, Enoshima Island Spa (Customers access to the restaurant freely)
*Preschool-aged children may not enter. Elementary-aged children accompanied by guardians may enter from Monday to Saturday.



MAP 1 Enoshima Aquarium

2-19-1 Katase Kaigan, Fujisawa city, Kanagawa Prefecture / TEL : 0466-29-9960
http://www.enosui.com/en/
9:00 a.m. to 5:00 p.m. from March to November / 10:00 a.m. to 5:00 p.m. from December to February.
* Get 10% off on admission by presenting your Enoshima 1-Day Passport!



MAP 2 Fujisawa Tourist center

2-20-13 Katase Kaigan, Fujisawa city, Kanagawa Prefecture / TEL : 0466-22-4141
http://www.discover-fujisawa.jp/
8:30 a.m. to 5:00 p.m.
* There may be cases where you can not use the space for your prayer when it's been used for meetings. Please contact the reception counter for the availability.



MAP 3 Enoshima Island Spa

2-1-6 Enoshima, Fujisawa city, Kanagawa Prefecture / TEL : 0466-29-0688
http://enoshimaislandspa.com/
10:00 a.m. to 10:00 p.m. from March to November / 11:00 a.m. to 9:00 p.m. from December to February.
* Get 10% off on admission by presenting your Enoshima 1-Day Passport!



MAP 4 Marudai Sensui

1-3-19 Enoshima, Fujisawa city, Kanagawa Prefecture / TEL : 0466-26-4701
http://www.cityfujisawa.ne.jp/~marudai/
11:00 a.m. to 7:00 p.m.(L.O)



MAP 5 Enoshima Shrine

2-3-8 Enoshima, Fujisawa city, Kanagawa Prefecture / TEL : 0466-22-4020
http://enoshimajinja.or.jp/
8:30 a.m. to 5:00 p.m.



MAP 6 Enoshima Samuel Cocking Garden (local museum)

2-3 Enoshima, Fujisawa city, Kanagawa Prefecture / TEL : 0466-23-2444
http://enoshimaseacandle.jp/garden/
9:00 a.m. to 8:00 p.m. Final admittance 7:30 p.m.
Adults: 200 yen, children: 100 yen



MAP 7 Enoshima Sea Candle

2-3 Enoshima, Fujisawa city, Kanagawa Prefecture / TEL : 0466-23-2444
http://enoshimaseacandle.jp/garden/
9:00 a.m. to 8:00 p.m. Final admittance 7:30 p.m.
Adults: 300 yen, children: 150 yen



MAP 8 Kinokuniya Honten

2-1-12 Enoshima, Fujisawa city, Kanagawa Prefecture / TEL : 0466-22-5663
8:00 a.m. to 6:00 p.m. (closed on Wednesdays)



MAP 9 Japanese Tea House Hello Kitty Saryo in Enoshima

1-4-12 Enoshima, Fujisawa city, Kanagawa Prefecture / TEL : 0466-47-6761
http://www.hellokittysaryo.jp/
10:30 a.m. to 5:30 p.m. (3/11-12/10), 10:30 a.m. to 5:00 p.m. (12/11-3/10)

